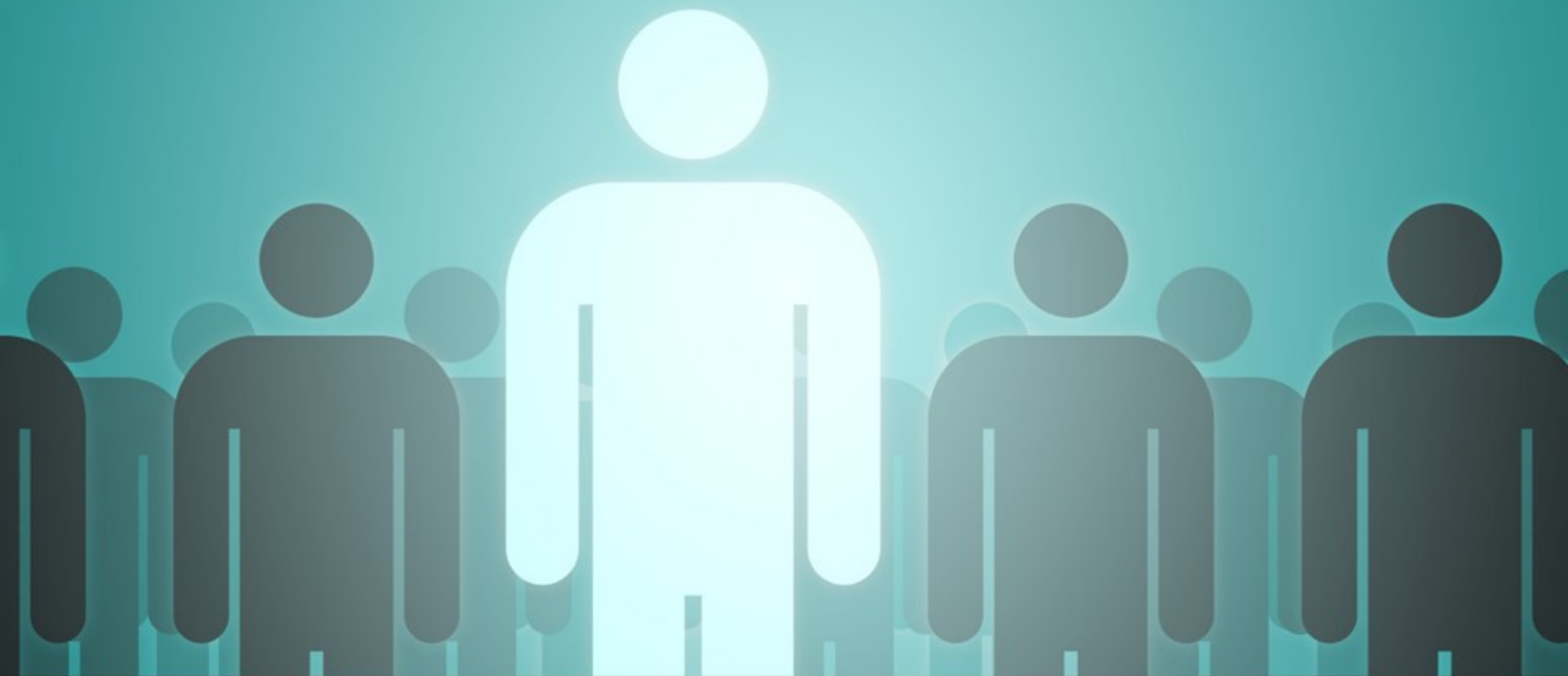


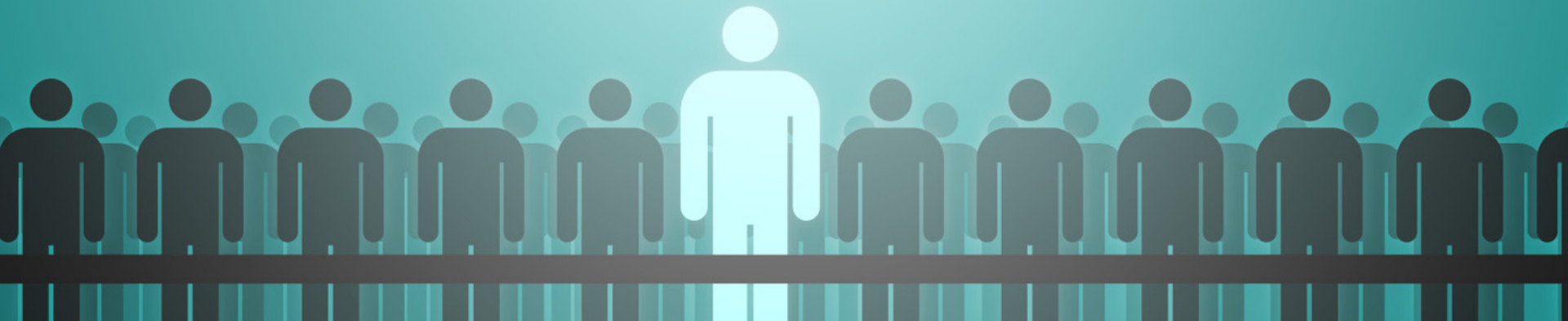
The Cost of Following Jesus




Luke 9:57-10:12

**1. Being a follower of
Jesus Christ requires
the highest levels of
commitment and trust.**


Luke 9:57-62






**Jesus warns
potential disciples
about what they can
expect if they follow
him: rejection by an
unbelieving world.**

9:57-58



**Jesus warns
potential disciples
that accomplishing
his mission is more
important than all
other endeavors.**

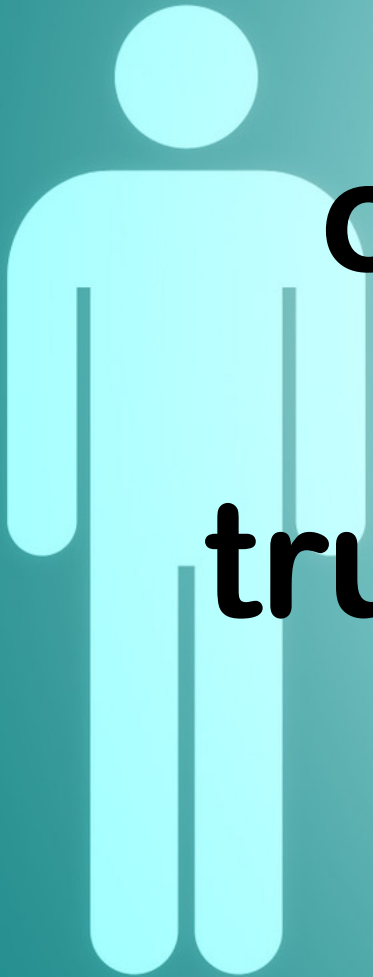
9:59–60



**Potential disciples
are warned that
commitment to Jesus
and his mission must
be first and constant.**

9:61–62

**Jesus is not calling
me to have perfect
commitment, but to
be committed, to
trust him completely,
and not turn back.**



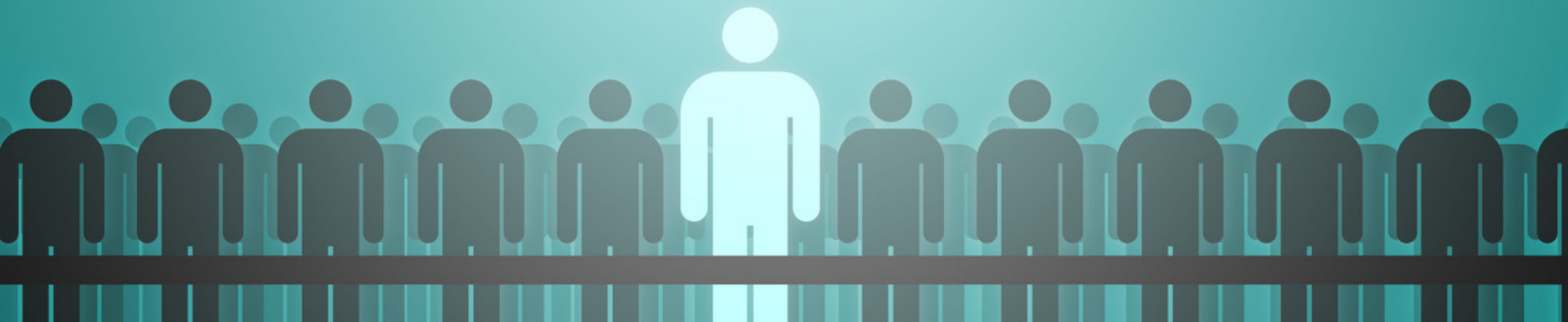
**Have I given my life to
follow Christ?**

**Do I trust him in all
things?**

**Will I follow him, even
after I fail, no turning
back?**




2. Accomplishing the mission or purposes of Jesus Christ requires the highest levels of commitment and trust.
Luke 10:1-12





**Disciples must
share God's burden
for God's mission.**

10:1-2

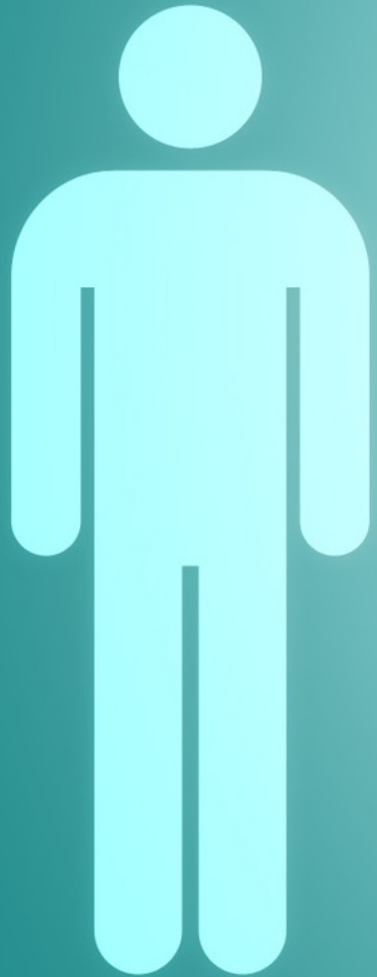


**Disciples will be
vulnerable as they
accomplish God's
mission, requiring
them to trust God in
and for all things.**

10:3-8

**Disciples will need to
stay focused on the
work of proclaiming
and demonstrating
that God's kingdom is
near to people. 10:9**





Disciples will face rejection. 10:10-12

**How committed am I
to accomplishing the
mission and
purposes of Jesus
Christ?**

